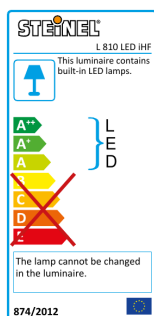
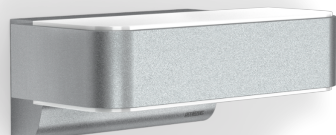


Sensor-switched outdoor light

L 810 LED iHF

V2 Silver

EAN 4007841 671310



Up-/Downlight

LED

30 years (Ø 4,5h / day)



3000K warm-white



intelligent high frequency sensor 160°



1 - 5 m



IP44



2-1000 lux



5 sec - 15 min



soft light start



10% basic brightness

Function description

The most modern outdoor light in the world. Designer sensor-switched outdoor light L 810 LED iHF with invisible high-frequency sensor, ideal for building entrances and fronts of buildings, 12 W STEINEL LED lighting system, 858 lm, 160° coverage angle, reach from 1 - 5 m, for stylish up and downlighting, includes soft light start and optional manual override for 4 hours.

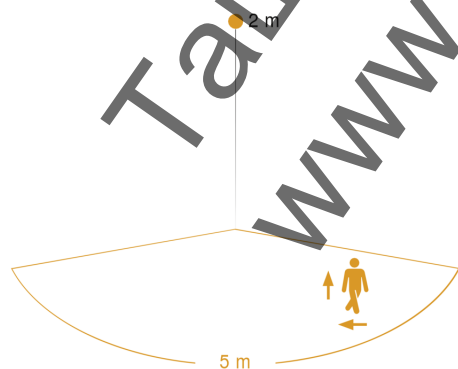
L 810 LED iHF

V2 Silver

EAN 4007841 671310

Technical specifications

Dimensions (L x W x H)	146 x 230 x 91 mm	Capability of masking out individual segments	No
Mains power supply	220 – 240 V / 50 – 60 Hz	Electronic scalability	Yes
Mounting height max.	2,50 m	Mechanical scalability	No
Sensor Technology	iHF (intelligent high-frequency technology)	Reach, radial	r = 5 m (35 m ²)
Transmitter power	< 1 mW	Reach, tangential	r = 5 m (35 m ²)
Output	12 W	Photo-cell controller	Yes
Interconnection	No	Twilight setting	2 – 1000 lx
Slave mode/selectable	Yes	Time setting	5 s – 15 Min.
Luminous flux	858 lm	Basic light level function	Yes
Efficiency	71,5 lm/W	Basic light level function time	10/30 min, all night
Colour temperature	3000 K	Soft light start	Yes
Colour variation LED	SDCM3	Continuous light	selectable, 4h
Colour Rendering Index CRI	80-89	Impact resistance	IK03
With lamp	Yes, STEINEL LED system	IP-rating	IP44
Lamp	LED cannot be replaced	Protection class	II
LED life expectancy (max. °C)	50000 h	Ambient temperature	-20 – 50 °C
Drop in luminous flux in accordance with LM80	L70B10	Housing material	Aluminium
Base	without	Cover material	Plastic, opal
LED cooling system	Active and Passive Thermo Control	Manufacturer's Warranty	3 years
With motion detector	Yes	Settings via	Potentiometers
Detection angle	160 °	Version	Silver
Sneak-by guard	Yes	PUH, EAN	4007841671310

Detection Zone

Mögliche Montagehöhe: 1,80 m – 2,50 m
Orange: radial und tangential

Dimension Drawing